



Area Sales Manager Contact:

Chris Stock

19 Sundown Terrace, Cochrane

Sunsetridge@homesbyavi.com

403-536-7220



Unless indicated, prices do not include GST and are subject to change. Floorplan, elevation and sq ft may not be exactly as shown. Builder reserves right to make changes. Rendering is artist concept only. E&OE.



Ridgeway

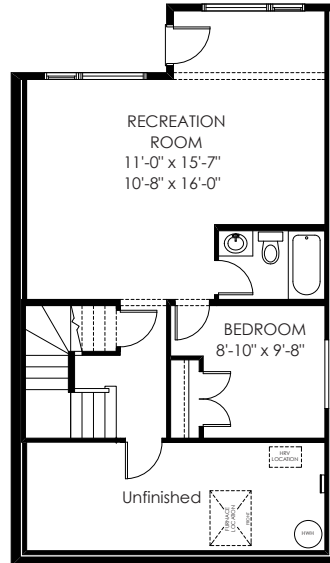
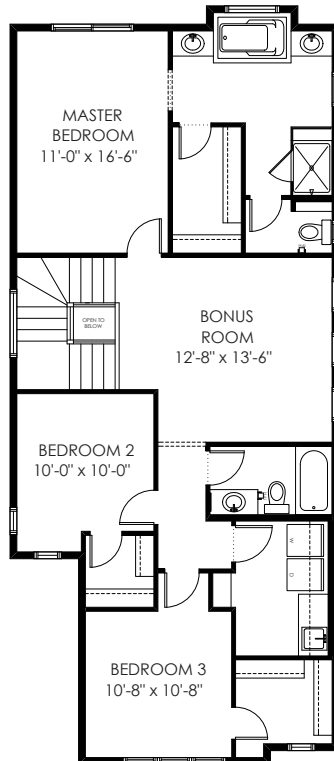
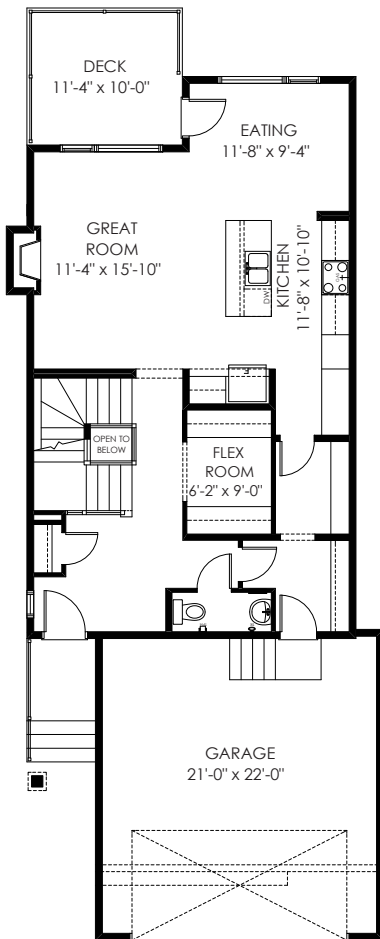
Available for leaseback

- South backyard backing on to pathway
- 9' Ceiling and beautiful LVP flooring throughout main floor
- Ample storage with upgraded kitchen cabinetry
- Bright central bonus room
- Large master bedroom with stunning five piece ensuite
- Developed walkout basement
- Smart investment – ask about our leaseback program

RIDGEWAY

Prices subject to change without notice. Actual floor plan, elevation and square footage may not be exactly as shown, and square footage is measured to Alberta Building Code (ABC) regulations. Builder reserves the right to make changes without notice. Rendering is artists concept only. E&OE

SHOW HOME



2145 SQ FT

24

SUNSET
COMMON

4 BEDROOMS
3.5 BATHROOMS

927 SQ FT MAIN

1218 SQ FT UPPER

615 SQ FT BASEMENT
finished area

