

Whistler- 1404 sq.ft.

3 Sunrise Heights, Cochrane, AB

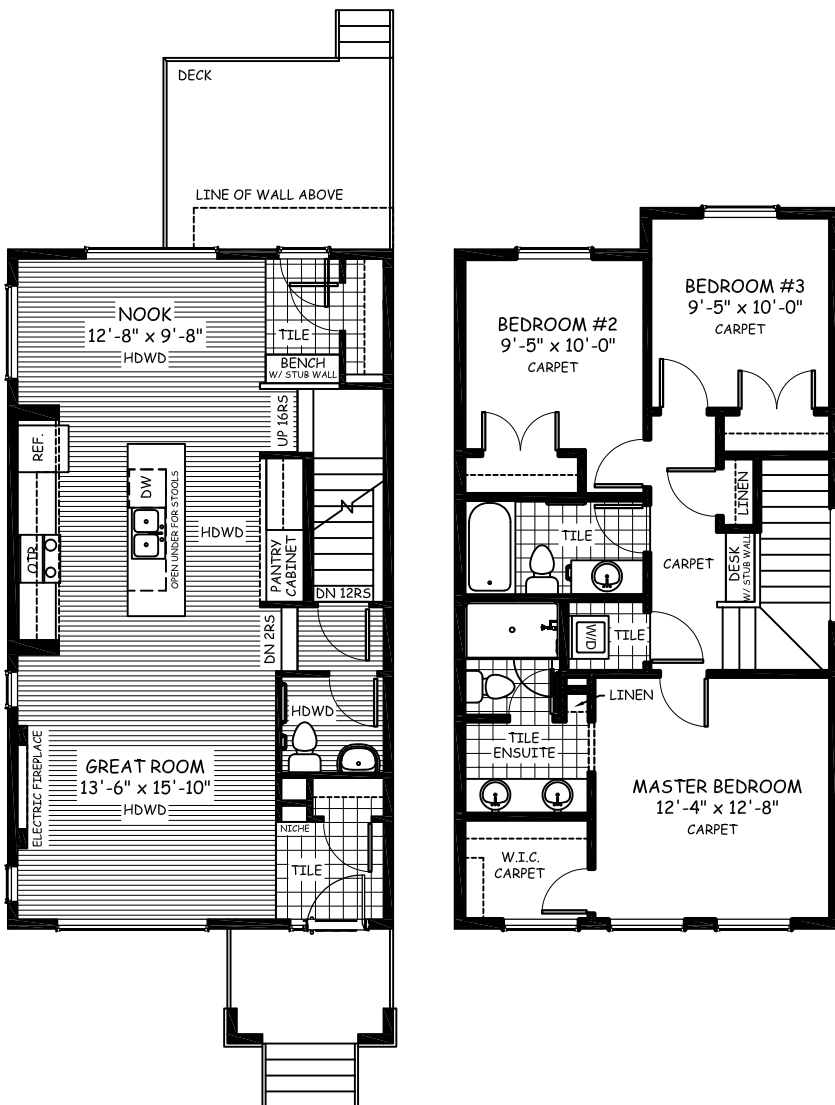


DOUGLAS HOMES
— PERFECT FIT —

Features

- 3 Beds, 2.5 Baths
- Master Bedroom with a Private Ensuite,
- & Large Walk-in Closet
- 9' Main Floor Ceiling
- Built-In Electric Fireplace
- Large Bright Windows
- Quartz Countertops
- Wrought Iron Railings
- Hardwood Floors
- Upper Floor Laundry

20'x20' Laned Garage



www.douglashomes.net



Douglas Homes Ltd



@douglashomesltd



@DouglasHomesLtd