

the Montenegro 4

2016
sq.ft.



3 bedrooms



2.5 bathrooms



24' wide



NOTES:

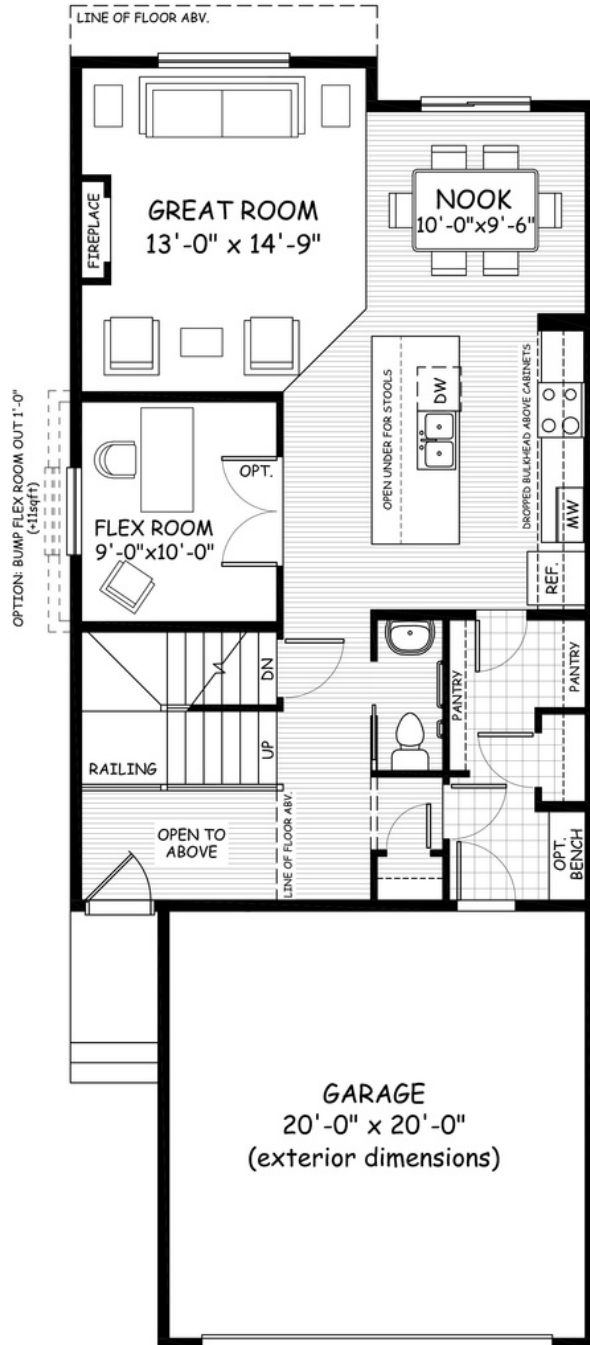


Artists's representation, may not be exactly as shown - all dimensions are approximate. All plans/designs are the exclusive property of Douglas Homes Ltd. Prices are subject to change without notice.

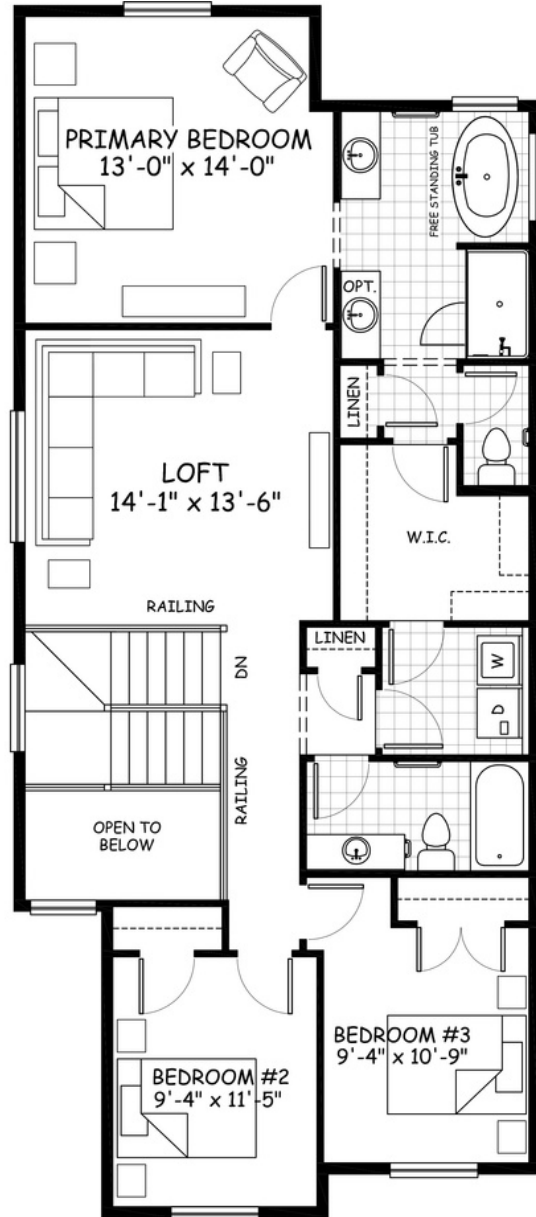
the Montenegro 4

2016 sq.ft.

24' wide
61'-4" long



MAIN
916 sq.ft.



UPPER
1100 sq.ft.

April 2021. Artists's representation, may not be exactly as shown and all dimensions are approximate. All plans/designs are the exclusive property of Douglas Homes Ltd. Prices are subject to change without notice.

